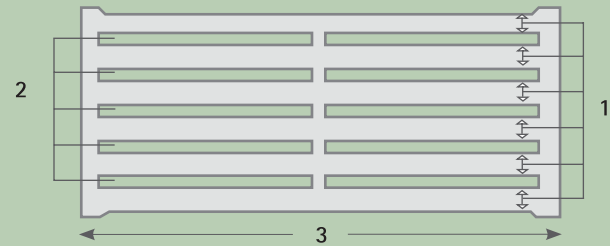


SIZES OF DURAPAK SLATTED RUBBER

C02 110/5'0"	35mm - 42mm	C32 156W/5'3"	38mm - 45mm
C04 120/5'6"	35mm - 45mm	C32 156W/6'3"	38mm - 45mm
C05 125/6'0"	38mm - 45mm	C36 160W/6'0"	38mm - 45mm
C05 125/7'0"	38mm - 45mm	C36 160W/7'0"	38mm - 45mm
C08 130/5'6"/7'	35mm - 45mm	C41 165N/5'3"	35mm - 42mm
C11 140/5'3"	38mm - 45mm	C41 165N/6'3"	35mm - 42mm
C11 140/6'3"	38mm - 45mm	C41 165N/7'3"	35mm - 42mm
C11 140/6'0"	38mm - 45mm	C42 165W/7'3"	38mm - 45mm
C11 140/7'0"	38mm - 45mm	C51 170N/5'3"	35mm - 42mm
C21 150N/5'3"	35mm - 42mm	C51 170N/6'3"	35mm - 42mm
C21 150N/6'3"	35mm - 42mm	C52 170W/5'3"	38mm - 45mm
C21 150N/6'9"	35mm - 42mm	C52 170W/6'3"	38mm - 45mm
C22 150W/5'3"	38mm - 45mm	C52 170W/7'3"	38mm - 45mm
C22 150W/6'3"	38mm - 45mm	C61 180/5'3"	38mm - 45mm
C31 156N/5'3"	35mm - 42mm	C61 180/6'3"	38mm - 45mm
C31 156N/6'3"	35mm - 42mm	C61 180/7'3"	38mm - 45mm

TO ENSURE THE CORRECT SIZE OF SLATTED RUBBER, YOU MUST:

- 1 Measure the width of the rib (eg. 156mm)
- 2 Measure the width of the gap (eg. 38mm)
- 3 Measure the length of the slat (eg. 12.5ft)
- 4 Count the number of ribs to be covered (eg. 22 per pen)
- 5 Measure the length and width of concrete apron area
- 6 Measure 3 ribs & 2 gaps (eg. 544mm)



PROVEN to increase daily liveweight gains*

* Recent Trial Statistics from Teagasc

Suitability Of Durapak Slatted Rubber

Durapak Slatted Rubber is suitable for use on the following slats:

- | | | |
|---|---|---|
| <ul style="list-style-type: none"> • Ardee • Armstrong • Banagher • Barretts • BD Flood • Booth • Campion • Casey • Clare • Clarke • Conaty • Coote • Corbett • Craven • Creagh • Croom • Delaney • Doyle | <ul style="list-style-type: none"> • Drumderry • Ducon • Erncast • Harrington • Hanlon • Hughes • John A Woods • Keatley • Kiely • Longford • Macarete • Maxwell • McCaffrey • McCann • McGarrity • McGrath • Midland • Moore | <ul style="list-style-type: none"> • Moylough • Mulcair • Mullacrew • Multicrete • Oran PreCast • Owens • O'Reilly • Plunkett • Quinn • Spollen • Solway • Taite • Tracey • Wexford • Wolfenden • Woolsey • Wright |
|---|---|---|

The Department of Agriculture & Food have a list of approved slat manufacturers. The most popular brands are listed above, however if your slats are manufactured by a company not on the list, please contact us for further information.

WHAT FARMERS SAY...

"We found Durapak Slatted Rubber easy to install and versatile in use. We used it in a creep area for calves and found it saved us a lot in straw costs over the winter months. We were able to also use it for fattening beef bulls in the summer and we found it increased daily liveweight gains and we had virtually no lameness with the animals" - **Derek Dunn, Strabane, Co Tyrone.**

"We have experienced a big reduction in lameness in beef bullocks; while the animals might be a wee bit dirtier, they are more comfortable and perform a lot better" - **John Neill, Carbery, Co Kildare.**

"We are extremely happy with the performance of our fattening dry cows since we installed Durapak Slatted Rubber – the comfort is unreal" - **Donal & Martin Vaughan, Broadford, Co Clare.**

"Since we installed Durapak Slatted Rubber, we have found a lot less stiffness and animals are more comfortable and find it much easier to get up" - **Alwyn Davies, Aberystwth, Wales.**

Durapak Agri Portfolio

- | | |
|---|--|
| <ul style="list-style-type: none"> • Megawrap® • Durapak Hi Tac® • Baler Netwrap • Duranets • Tickitape • Patches • Silage Covers • Silo Bags • Silo Nets • Biocell Lac | <ul style="list-style-type: none"> • Biocell Farm Mix • Durasile Grass Silage Additive • Elephant Baler Twine • Magnapak Protected Fat • Cubicle Mats • Continous Rubber • Slatted Rubber Mats • Calf Slats • Silclear Dairy Tubing |
|---|--|

Your Durapak Agri Approved Supplier is:



FOR FURTHER INFORMATION, PLEASE CONTACT:

T: (021) 487 5511 F: (021) 487 5515
From N. Ireland & UK: 0800 085 3277
E: info@durapakagri.ie W: www.durapakagri.ie

Durapak Slatted Rubber



Design by DMdesign 021 4882291 www.durapakagri.ie

PROVEN to increase daily liveweight gains*

*Recent Trial Statistics from Teagasc



DURAPAK COMES OUT ON TOP in the Combined Teagasc Beef Studies on Slatted Rubber

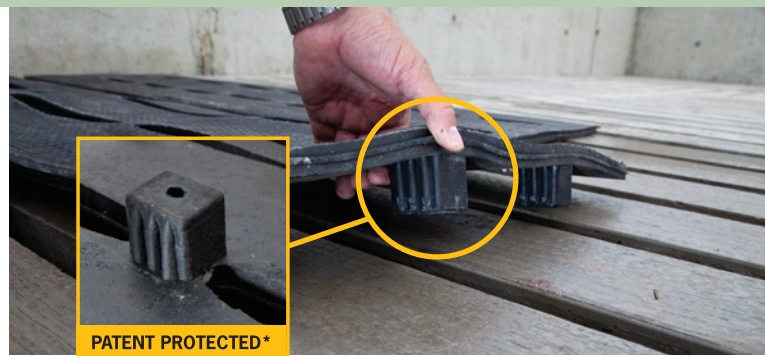
It is widely known for years that cattle housed on slatted rubber mats have been shown to gain weight faster than animals housed on bare concrete slats.

Teagasc carried out an intensive trial comparing 360 Beef Bullocks using; 3 different Slatted Rubbers, out-wintering Pads and bare concrete slats. The results from the Teagasc Trial on Slatted Rubber for 2006 & 2007 are summarised in the bar charts on the right.

The Durapak mat is colour coded BLUE. Mat B & C are two well known competitor products. Durapak Slatted Rubber came out on top with 14kgs of extra carcass weight over and above bare concrete slats and together with a higher carcass classification was worth between €45 - €55 per head of animal.



Picture Sequence shows the ease with which the Durapak Slatted Rubber Mat is positioned onto the slat



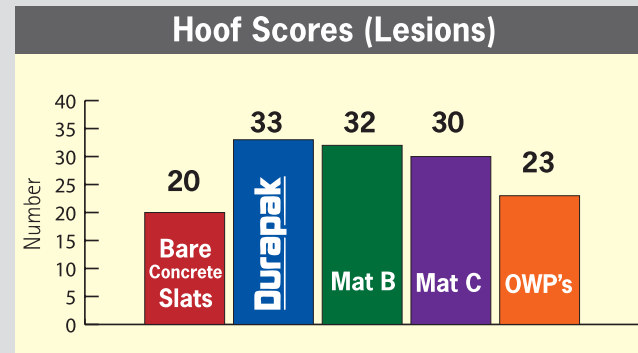
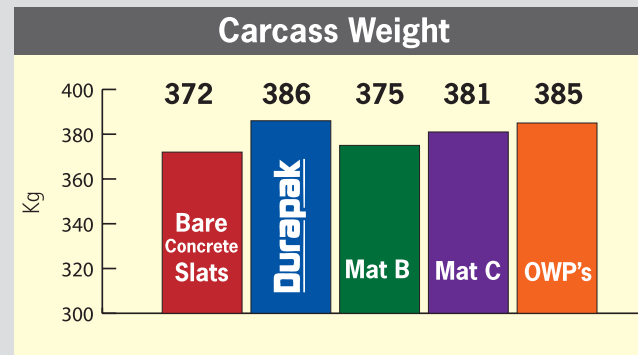
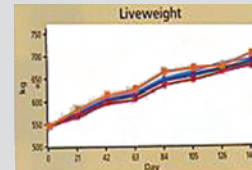
*Durapak Slatted Rubber's unique 3 piece patented design allows for greater comfort and enhanced performance for the animals. The double anchoring system is the ultimate in terms of a secure installation.

Study 1 & 2 Combined - Finishing Beef Steers

Animals: Continental Crossbred Steers
(n = 72 animals per treatment; mean initial liveweight = 538 (s.d. 42.2)kg)
Space allowance: 2.73m²/head - slats, slats covered with mats;
12.00m²/head - OWP's

Treatments:

- Concrete Slats Alone
- Durapak Slatted Rubber
- Competitor Mat B
- Competitor Mat C
- Out-wintering pads (OWP's)



Other Points:

- Carcass fatness: No difference
- Carcass conformation: OWP & Durapak > Slats
- Hoof lesions: Mats > Slats & OWP
- Lameness: None recorded
- Weight of hides: OWP > Slats & Mats

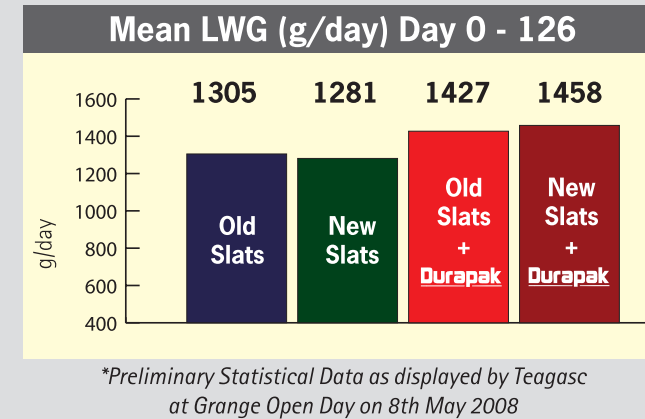
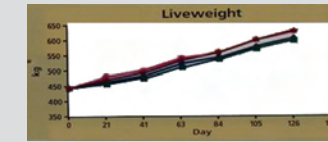
*Preliminary Statistical Data as displayed by Teagasc at Grange Open Day on 8th May 2008

Winter 2007 - Finishing Beef Bulls

Animals: 72 Continental Crossbred Beef Bulls
(n = 18 bulls per treatment; mean initial liveweight = 442 (s.d. 44.4)kg)
Space allowance: 2.98m²/head

Treatments:

- Old Slats
- New Slats
- Old Slats + Durapak
- New Slats + Durapak



The Benefits Of Durapak Slatted Rubber...

- Animals gain more weight - (See Teagasc Trial Results above where Durapak Slatted Rubber came out on top with 14kgs of extra carcass weight over and above bare concrete slats and together with a higher carcass classification was worth between €45 - €55 per head of animal)
- Durapak Slatted Rubber combines the ideal balance between the softness and comfort characteristics, and the long lasting durable properties necessary for use over a long number of years
- Durapak Slatted Rubber is manufactured from high quality natural rubber which is soft and comfortable - reducing stress and lameness, thus increasing daily liveweight gains in fattening cattle
- Durapak Slatted Rubber with its unique cored wedge is suitable for use with a wider range of gap widths - more flexible for fitting purposes
- Suitable for all types of slats including new and used slats
- Ideal solution for slippery slats
- Less lameness
- Less stress
- Three times more grip
- More comfortable, livelier animals

More €€€€€€ With Durapak

Compare the Benefits Against Concrete:

	Concrete	Durapak	Mat B	Mat C
Additional Carcass Weight Per Head Kilograms	-	14	3	9
Total Carcass Weight Kilo	372	386	375	381
Official Steer Price For R3's Week Ending 04.08.13 IFJ Cents Per Kilogram Ex. Vat	409.50	409.50	409.50	409.50
Bonus For Higher Carcass Confirmation eg. R3 - U3	-	4.0	-	-
Total Value Per Head €	€1523.34	€1596.11	€1535.63	€1560.20
Extra Value Per Head Over Concrete €	-	€72.77	€12.29	€36.86
Value Per Pen of 10 Cattle €	-	€727.70	€122.90	€368.60

Do your own calculations:

No. of cattle finished per annum:

Multiplied x €70 =

Your total benefit =

The Durapak Slatted Rubber's unique design allows for greater comfort and enhanced performance for the animals and the double anchoring system is the ultimate in terms of a secure installation.

ORDER YOUR REQUIREMENTS TODAY...